

FORMOST

FORMOST

THE FORMOST FROZEN PATTY BAGGER

Quality is "First and Formost"



Ideal for: hamburger, chicken, seafood and vegetarian patties

POSITIVE PRODUCT CONTROL

QUICK, SIMPLE CHANGEOVER

MAINTAINS PRODUCT QUALITY

GENTLE PRODUCT HANDLING

UP TO 50 BAGS PER MINUTE

PROVEN DEPENDABILITY

GENTLE, DEPENDABLE BAGGING

The Formost Fuji Frozen Patty Bagger will automatically package frozen stacks of meat patties in either a flat pack or penny pack configuration. A bucket transfer infeed system presents penny packed stacks of patties to the bagger. Specially designed paddles move product through the machine and into the bags with a gentle hand-like motion.

The Frozen Patty Bagger is compact, durable and carefully engineered for trouble-free operation. It will save maintenance costs, too. All parts are readily accessible for easy cleaning and maintenance.

FORMOST FUJI CORPORATION

19211 144th Avenue NE • Woodinville, WA 98072

Phone: 425-483-9090 • Fax: 425-486-5656 • email: salesoffice@formostfuji.com

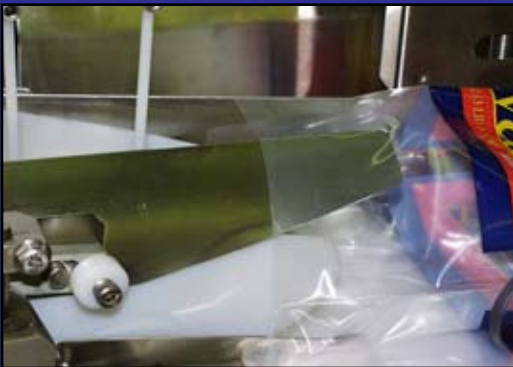
www.formostfuji.com

Reliable Bagging

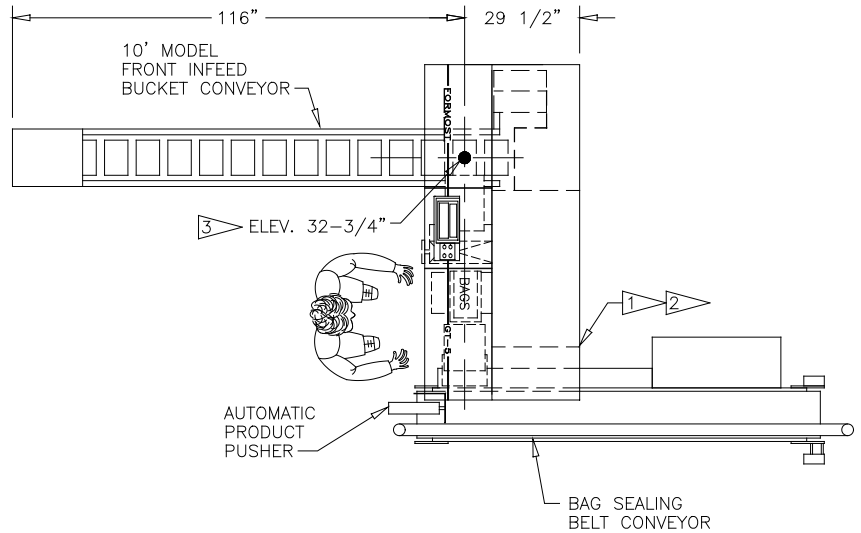
Penny packed patties are transferred to the bagger by a bucket infeed system.



The system features a special bag opener for preparing the bag for product insertion.



After the patties are placed in the bag, the bag opener releases and product motion separates the bag from the wicket.



The Formost Fuji Patty Bagger is available in several left and right hand configurations.

Optional Features

- Automatic bag closure device
- Wide product capability
- Spare Parts Kit
- Quick change buckets for different product shapes
- Rear infeed configuration
- In-line infeed configuration
- Continuous, rotary or multi-wicket bag

Formost GTS Bagger					
Model	Length	Paddles	Paddle Spacing	Product Length	Bag Length
GTS-4	86"	4	40"	6" to 16"	20" max

These specifications may vary according to special applications. Specifications are based upon the latest information available at the time of publication. Formost reserves the right to make changes in materials, equipment and specifications without prior notice.



FORMOST FUJI CORPORATION

19211 144th Avenue NE • Woodinville, WA 98072

Phone: 425-483-9090 • Fax: 425-486-5656 • email: salesoffice@formostfuji.com

www.formostfuji.com